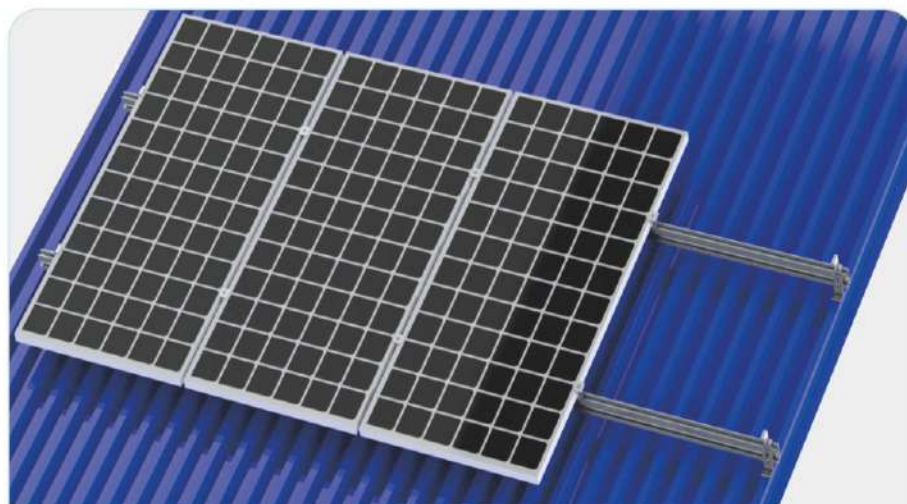


## NX-004 Color steel tile roof L angle bracket



### DESCRIPTION:

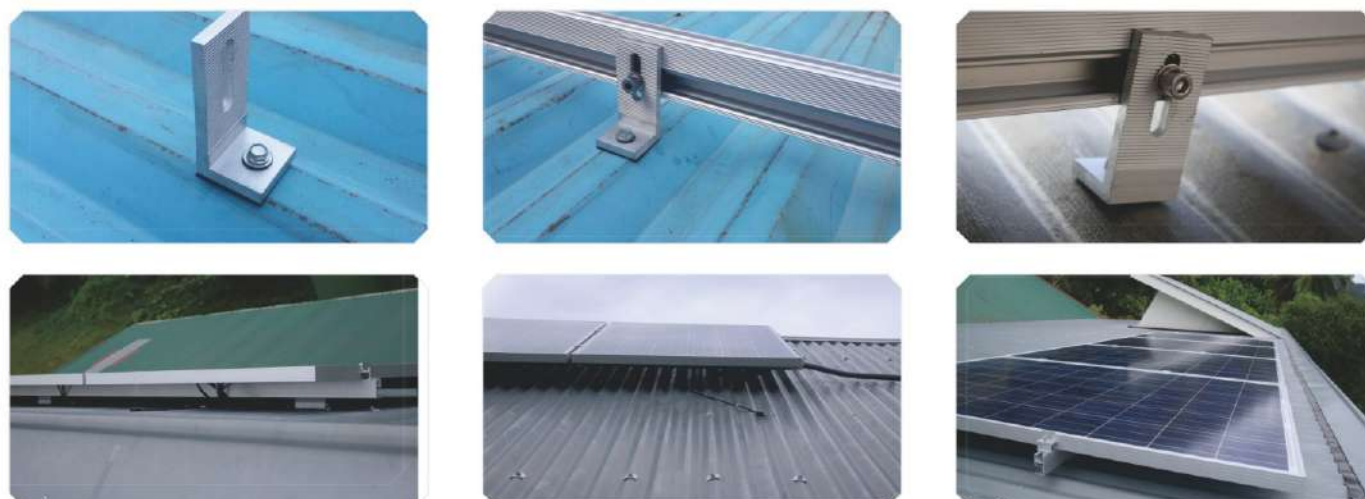
- Installation place:  
Caigang watts roof
- Module slop:  
According to the practical demand
- Drawing force:  
1000N
- Wind load:  
40m/s、32.5kg/m<sup>2</sup>、level 13
- Snow load:  
70kg/m<sup>2</sup>
- Module type:  
Frame
- Material:  
Aluminium profile
- Colour:  
Natural
- Warranty time:  
25 years.

This system consists of the following components:



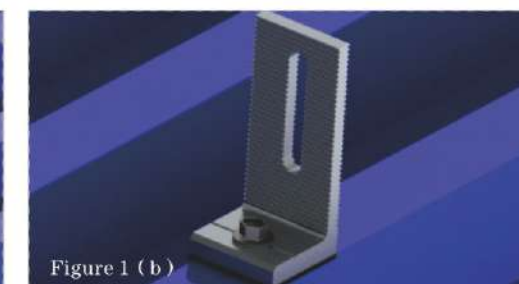
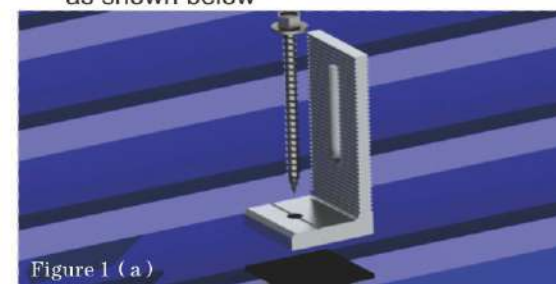
- ### ADVANTAGES:
1. Good Appearance.
  2. Easy and flexible Installation.
  3. Diversified design
  4. Light dead-weight.
  5. Save installation materials

### Project example photo



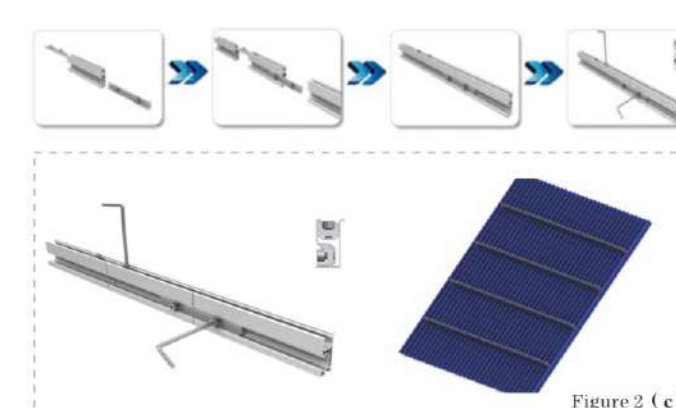
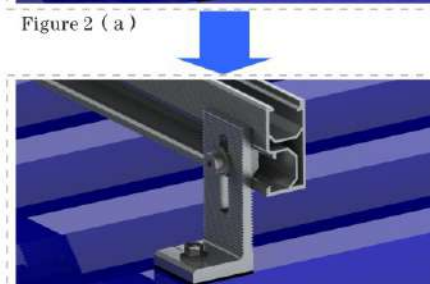
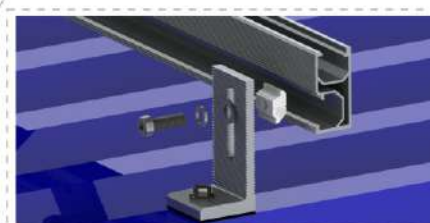
### 1 First step

Use the self-tapping screws to fix the L-angle base on the color steel tile (with waterproof pad), as shown below



### 2 Second step

Use the M8\*25 hexagon socket head bolt, flat washer, spring washer and slider nut on the guide rail to fix it on the L angle base, as shown below.



Remark: When the array is rather long, the rail and the rail are fixed by the rail connecting piece, as shown above:

### 3 Third step

Fix the modules on the rail with side clamps and the middle clamps, as shown below.



Figure 3(a-1)



Figure 3(a-2)

Side clamp fixed



Figure 3(b-1)



Figure 3(b-2)

Middle clamp fixed