

PRODUCT SPECIFICATION

Model NO.	NG134
Nominal Capacity(AH)	134Ah
Nominal Voltage(V)	3.2V
Standard Charge Current(A)	0.5C
Maximum charge current(A)	1C
Impedance(Ω)	0.2mΩ
Max. discharge current(A)	2C
Max.charge voltage(V)	3.65V
Discharge cut-off voltage(V)	2.5V
Charge working temp.(°C)	0~55°C
Discharge working temp.(°C)	-20~55°C
Cycle life	6000 Cycles
Brand	EVE/CATL/REPT/NARADA/GOTION/LISHEN



PRODUCT FEATURES



Extreme light weight



Extended cycle life



Low self discharge



Superior cranking power



Completely sealed



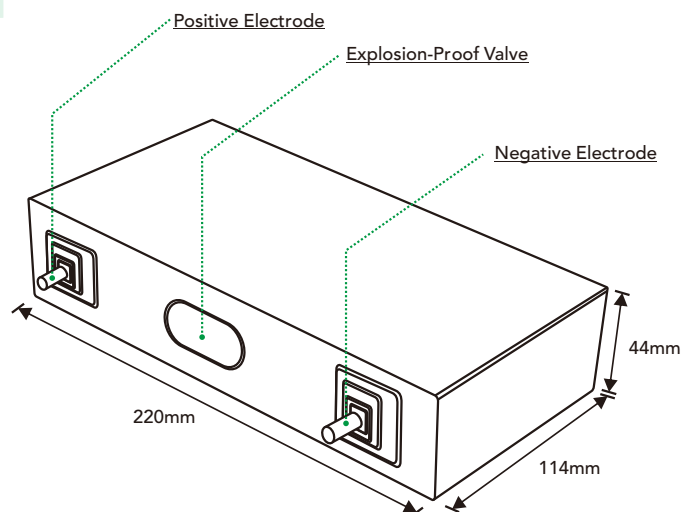
Environmental protection



Broad application



VDA compliant

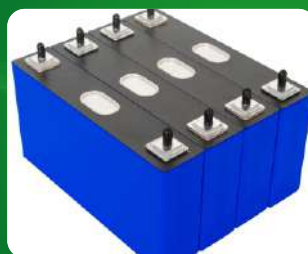


LONG BATTERY LIFE



HIGH CAPACITY

Super long life of about 5 years, large capacity battery life, long-distance riding without worrying about power problems



HIGH-QUALITY

Sufficient capacity and sufficient amount to refuse false bids without fear of wind and rain, cold resistance and high temperature resistance

PRODUCT APPLICATIONS



Energy Storage Systems

Generation-side energy storage | Grid-side energy storage | Power-side energy storage



Passenger Cars

Pure Electric Private Car | Pure Electric Operating Vehicle



Business Applications

Road passenger vehicles | Logistics Delivery Vehicle | Heavy Duty Transport Vehicle
Road cleaning vehicles | Construction Machinery Vehicle | Two-wheeled vehicles
Ships | Special application vehicles