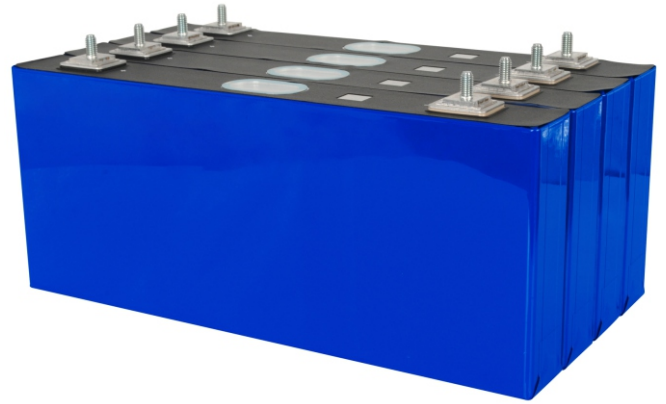









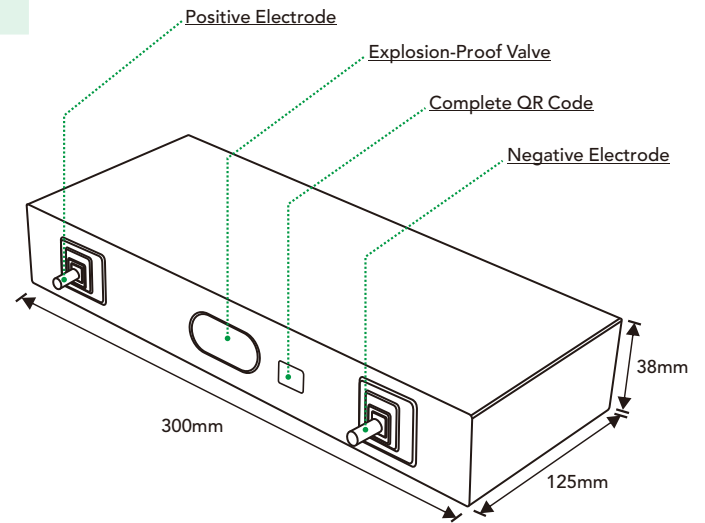
PRODUCT SPECIFICATION

Model NO.	NG218
Nominal Capacity(AH)	218Ah
Nominal Voltage(V)	3.7V
Standard Charge Current(A)	0.5C
Maximum charge current(A)	1C
Impedance(Ω)	0.2m Ω
Max. discharge current(A)	2C
Max.charge voltage(V)	3.65V
Discharge cut-off voltage(V)	2.5V
Charge working temp.($^{\circ}$ C)	0~55 $^{\circ}$ C
Discharge working temp.($^{\circ}$ C)	-20~55 $^{\circ}$ C
Cycle life	6000 Cycles
Brand	EVE/CATL/REPT/NARADA/GOTION/LISHEN



PRODUCT FEATURES

 Extreme light weight	 Extended cycle life	 Low self discharge	 Superior cranking power
 Completely sealed	 Environmental protection	 Broad application	 VDA compliant



LONG BATTERY LIFE



HIGH CAPACITY
Super long life of about 5 years, large capacity battery life, long-distance riding without worrying about power problems



HIGH-QUALITY
Sufficient capacity and sufficient amount to refuse false bids without fear of wind and rain, cold resistance and high temperature resistance

PRODUCT APPLICATIONS



Energy Storage Systems

Generation-side energy storage | Grid-side energy storage | Power-side energy storage



Passenger Cars

Pure Electric Private Car | Pure Electric Operating Vehicle



Business Applications

Road passenger vehicles | Logistics Delivery Vehicle | Heavy Duty Transport Vehicle
Road cleaning vehicles | Construction Machinery Vehicle | Two-wheeled vehicles
Ships | Special application vehicles