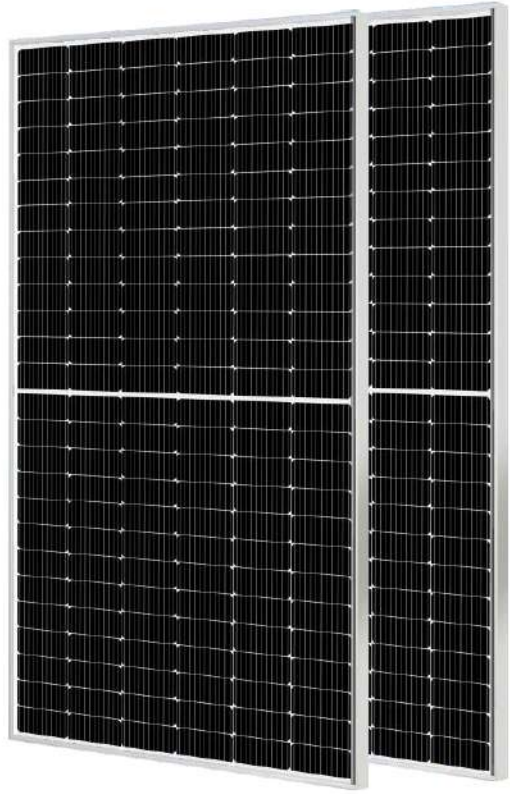


# Module Picture



## NGD600M-156

Mono Half-cut Single/Double Glass Module

580-600/MB Series

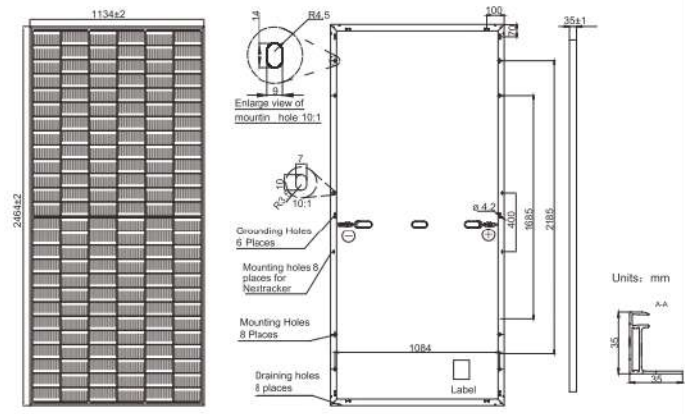
### INTRODUCTION

MONO half-cut single / double glass module, assembled with multi-busbar PERC technique and half-cut structure, which can not only absorb the energy from the front of the module, but also absorb the reflected light and the scattered light from the back, offer the advantages of higher power output, reduce shading effect on the energy generation, enhance the mechanical load bearing capacity as well.

## LCOE save 6-8%

- ↓6% Saving logistics cost
- ↓7% Saving cable cost
- ↓8% Saving bracket cost
- ↓9% Saving labor cost

# Mechanical Diagrams



PS: Frame color and cable length can be customized

# Specifications

Solar Cell(Type/Size)	MONO(182mm)
Solar Cells Number	156pcs(6*26)
Dimensions	2464×1134×35mm
Weight	30.0Kg/Pcs
Structure	3.2 Glass + EVA film + Back
Frame	Anodized Aluminum Alloy
Junction Box	IP6883*Bypass Diode
Cable Cross Section Size	4.0mm <sup>2</sup> .(+)280mm/(-)400mm
Mechanical Load	Front 5400Pa/Back 2400Pa
Packing Number	31Pcs/Pallet
Packing Volume	3.542Cbm/Pallet
40'HQ Container	590Pcs

### Electrical Parameters at STC

Module Type	NGD580P	NGD585P	NGD590P	NGD595P	NGD600P
Rate Maximum Power( Pmax/W)	580	585	590	595	600
Module Efficiency(%)	20.70	20.90	20.10	21.30	21.50
Open Circuit Voltage(Voc/V)	53.50	53.65	53.80	53.95	54.10
Short Circuit Current(Isc/A)	13.82	13.89	13.96	14.03	14.10
Voltage at Pmax(Vmp/V)	44.90	45.07	45.22	45.39	45.53
Current at Pmax(Imp/A)	12.92	12.98	13.05	13.11	13.18
Power Tolerance	0~+5w				
Temperature Coefficient of Isc	+0.046%/°C				
Temperature Coefficient of Voc	-0.276%/°C				
Temperature Coefficient of Pmax	-0.350%/°C				

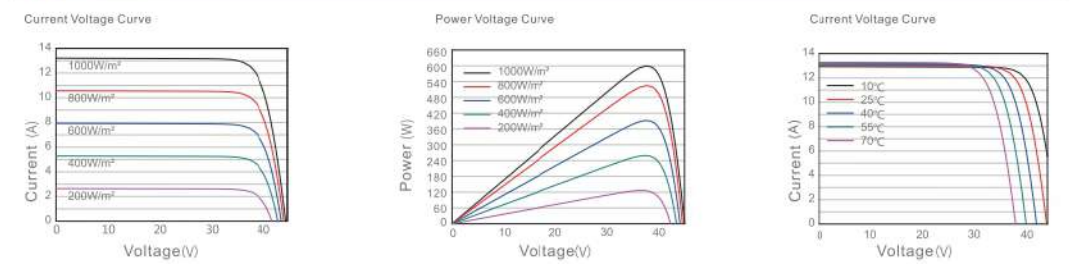
STC Irradiance 1000W/m<sup>2</sup> Cell Temperature 25°C AM1.5

Remark: Electrical data in this catalogue does not refer to a single module, and it's not part of the offer. It only serves for the comparison among different module types.

### Electrical Parameters at NOCT

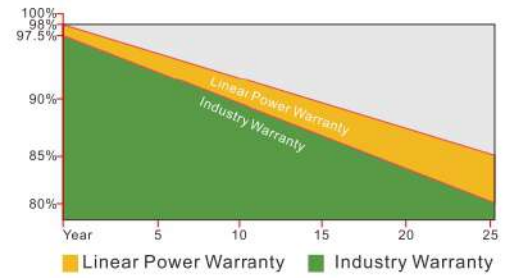
Module Type	NGD580P	NGD585P	NGD590P	NGD595P	NGD600P	Operating Conditions
Rate Maximum Power( Pmax/W)	438	441	445	448	452	Operating Temperature -40~+85°C
Open Circuit Voltage(Voc/V)	50.09	50.22	50.35	50.48	50.60	Maximum System Voltage 1500VDC
Short Circuit Current(Isc/A)	11.03	11.08	11.12	11.17	11.22	NOCT 45±2°C
Voltage at Pmax(Vmp/V)	42.03	42.17	42.39	42.51	42.73	Fireproof Performance Glass C
Current at Pmax(Imp/A)	10.42	10.46	10.50	10.54	10.58	Maximum Series Fuse 25A
NOCT: Irradiance 800W/m <sup>2</sup> Ambient Temperature 20°C Wind at 1m/S AM1.5						Temperature Coefficient of Voc -0.276%/K
						Temperature Coefficient of Isc +0.046%/K

### Characteristics



### First-class Quality Assurance

- 10-year warranty for material and technology
- 25-year linear power output warranty



### Comprehensive Certificates

- IEC61215, IEC61730
- ISO9001:2015 Quality management systems
- ISO45001: Environmental management systems
- ISO45001:2018 Occupational health and safety management systems

